

SERVICE-INFO



Visual differences in the over-running alternator pulley 535 0218 10

Manufacturer: Ford, Volvo

Models:

Ford: Focus II

Volvo: S40 II, V50, C70 II

Engines:

Ford: 2.5 ST

Volvo: 2.4, 2.4 i, 2.4 D5, 2.5

Part no.: 535 0218 10

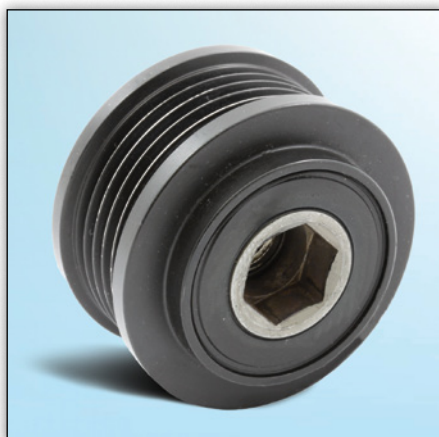


Image 1: Production version

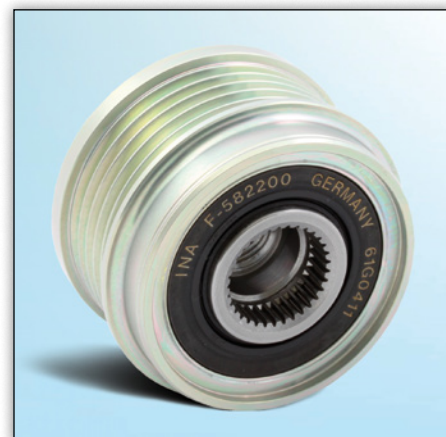


Image 2: Aftermarket version

Two different over-running alternator pulley versions can be installed in the models mentioned above.

Image 1 shows the production over-running alternator pulley, which is installed by the corresponding vehicle manufacturer.

Image 2 shows the over-running alternator pulley offered by Schaeffler Automotive Aftermarket for the spare parts market.

Note:

The two over-running alternator pulleys fully comply with the technical requirements and only differ in their appearance.



Image 3: INA special tool, part no. 400 0241 10

A special tool is required to remove and install the over-running alternator pulley (**Image 3**).



Note the specifications of the vehicle manufacturer!

Appropriate spare parts can be found in our on-line catalogue at www.Schaeffler-Aftermarket.com or in RepXpert at www.RepXpert.com.

Issued 07.2011

INA 0079

Technical subject to change

© 2011 Schaeffler Automotive Aftermarket

Any reference to replacement part numbers for vehicle manufacturers is for comparison purposes only.

For further information:

Phone: +44 (0) 14 32 264 264*

Fax: +44 (0) 14 32 375 760

Info@LuK-AS.co.uk

www.Schaeffler-Aftermarket.com

* Calls from within the UK 08457 001100

