



**PI 1641**  
For technical personnel only!  
1/1

# PRODUCT INFORMATION

## FUEL PUMP FITTING TOOL

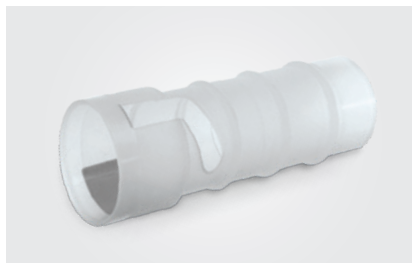
### EASIER REPLACEMENT OF IN-TANK PUMPS

| Vehicle                   | Product             | Pierburg no. |
|---------------------------|---------------------|--------------|
| Various BMW and VW models | Tool for fuel pumps | 4.00063.00.0 |

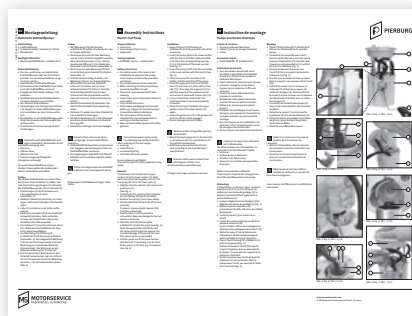
In many modern vehicles, the actual fuel pump is part of the fuel delivery module, which, for the purpose of replacement, is located in the fuel tank with attachments such as the pressure regulator and fluid-level sensor.

Motorservice offers a range of spare pumps, where only the fuel pump itself has to be replaced and not the complete fuel delivery module. The fitting tool for the fuel pump (Pierburg no. 4.00063.00.0) makes replacement quick and easy.

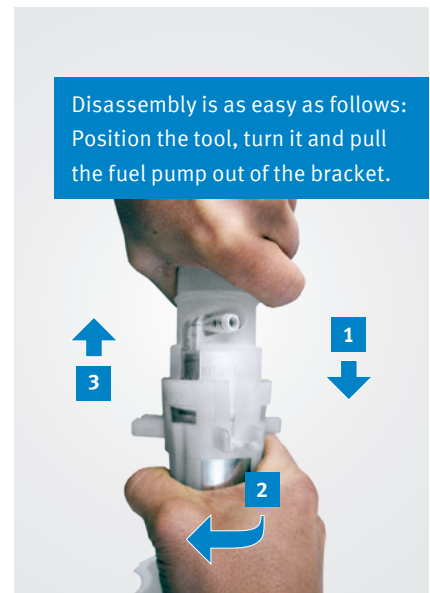
The tool enables easier removal of the electric fuel pumps listed below from the fuel delivery module.



Pierburg no. 4.00063.00.0



Fuel pumps come with assembly instructions that clearly describe their replacement.



Disassembly is as easy as follows:  
Position the tool, turn it and pull the fuel pump out of the bracket.

The tool spreads open the brackets holding the fuel pump in the fuel delivery module. This is particularly easy with fuel pumps with an angled outlet nozzle.

#### The tool can be used for the following fuel pumps:

| Pierburg no. | Suitable for | Model                           |
|--------------|--------------|---------------------------------|
| 7.22013.02.0 | BMW          | 5 series (E39)                  |
| 7.22013.57.0 | BMW          | X5 (E53)                        |
| 7.22013.61.0 | BMW          | M5 (E39)                        |
| 7.22013.69.0 | BMW          | 7 series (E65/66/67)            |
| 7.28303.60.0 | Volkswagen   | Golf IV, V; Passat 1.9, 2.0 TDI |

| Pierburg no. | Suitable for | Model   |
|--------------|--------------|---|
| 7.28303.70.0 | Audi         | A4  |
|              | BMW          | 520d, 525d, 530d                                |
| 7.50007.50.0 | BMW          | X5 (E53)  |
| 7.50111.60.0 | Volkswagen   | Fox 1.4 TDI, Passat 1.9/2.0 TDI, Tiguan 2.0 TDI |

All content including pictures and diagrams is subject to change. For assignment and replacement, refer to the current catalogues or systems based on TecAlliance.